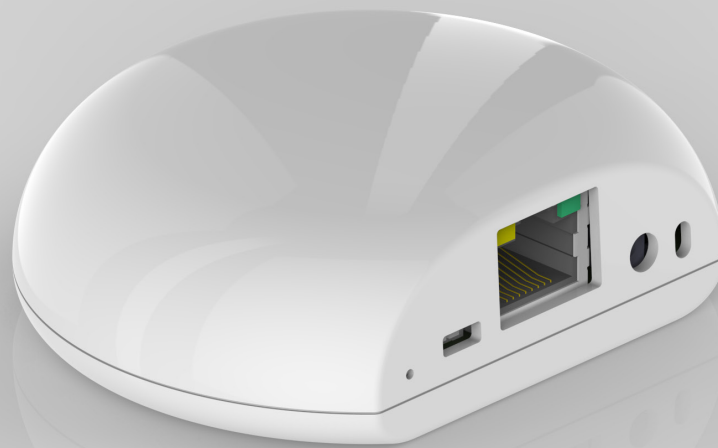


Multi Function Repeater POE



OVERVIEW

The Multi Function Repeater is a flexible tool to build a Control4 system more effectively. It combines the capabilities of a repeater and router with 3 contact inputs and a temperature sensor.

The repeater function allows you to join more devices to your network and with the industry-leading performance of the Axxess HPZM Radio Module, this device adds additional router range and capability to your ZigBee network.

POE (Power Over Ethernet) provides alternative power option.

If you require relay outputs the Relay & Contact Sensor provides all the same functions with 3 relay outputs.



Multi Function Repeater POE

MFR-C4ZB-11P

WIRELESS

- Axxess HPZM Radio Module
- ZigBee PRO (802.15.4)
- Long range router capability; successful free range line of sight testing to 1500ft. Range will vary with indoor application.

COMPLIANCE/APPROVALS

FCC Part 15 | IC | CE

TEMPERATURE SENSOR

Accurate to +/- 1°C Operating range of -40°C to 70°C

COLOR

Black | White

REPEATER FUCTION

Join up to 16 devices and/or extend the range of your ZigBee network.

CONTACT SENSOR FUNCTION

3 contact sensor inputs using RJ12 jack

POWER SUPPLY

- A DC power adapter is included with either a North American, European, UK or Australia/China plug
- Power over ethernet is available via external RJ45 jack

DIMENSIONS

W 3.1" x H " x D 2.66" 1.0

W 7.87cm x H 6.76" x D 2.54cm

MOUNTING

2 keyholes and screws

DRIVERS

Download from
axxind.com/dealers/drivers

HOW TO ORDER

axxind.com/dealers

WHAT'S IN THE BOX

