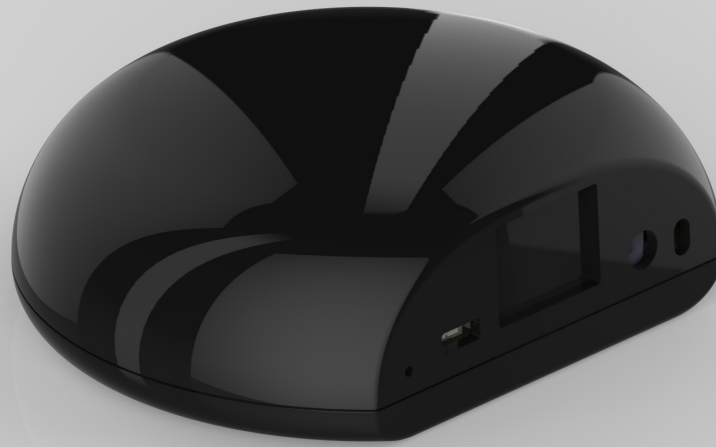


Multi Function Repeater



OVERVIEW

The Multi Function Repeater is a flexible tool to build a Control4 system more effectively. It combines the capabilities of a repeater and router with 3 contact inputs and a temperature sensor.

The repeater function allows you to join more devices to your network and with the industry-leading performance of the Axxess HPZM Radio Module, this device adds additional router range and capability to your ZigBee network.

If you require relay outputs the Relay & Contact Sensor provides all the same functions with 3 relay outputs.



Multi Function Repeater

MFR-C4ZB-11

WIRELESS

- Axxess HPZM Radio Module
- ZigBee PRO (802.15.4)
- Long range router capability; successful free range line of sight testing to 1500ft. Range will vary with indoor application.

COMPLIANCE/APPROVALS

FCC Part 15 | IC | CE

TEMPERATURE SENSOR

Accurate to +/- 1°C Operating range of -40°C to 70°C

COLOR

Black | White

REPEATER FUNCTION

Join up to 16 devices and/or extend the range of your ZigBee network.

CONTACT SENSOR FUNCTION

3 contact sensor inputs using RJ12 jack

POWER SUPPLY

A DC power adapter is included with either a North American, European, UK or Australia/China plug.

Aux power:
6.5V-24V AC or DC

DIMENSIONS

W 3.1" x H " x D 2.66" 1.0
W 7.87cm x H 6.76" x D 2.54cm

MOUNTING

2 keyholes and screws

DRIVERS

Download from
axxind.com/dealers/drivers

HOW TO ORDER

axxind.com/dealers

WHAT'S IN THE BOX

